

# EXPLANATION

Qal  
Alluvium

Tsi

Cherty silica and quartz  
Formed during one or more erosion cycles  
of uncertain age, probably middle Tertiary

Tcu  
Tel

Carbonate rocks  
Tcu, upper sequence; limestone, marl, and  
conglomerate associated with magnesian chalk;  
of post-Eocene Tertiary age  
Tel, lower sequence; fossiliferous limestone, marl,  
and indurated coquina; of Eocene age

Kl

Limestone  
Thin- to thick-bedded white  
limestone of Sierra de Camaján

Kv  
Kvl

Volcanic tuff, flows and dikes  
Kvl, interstratified limestone

Kvl

Limestone  
Thin-bedded white to brown  
fossiliferous limestone

gb  
fu  
tr

Feldspathic rocks of the ultramafic complex  
fu, unaltered  
gb, gabbro  
tr, troctolite  
Contact between units not mapped

spd

Serpentinized peridotite and dunite

Contact, dashed where approximately located

Limit of outcrop

Fault, dashed where approximately located

Thrust fault - Sawteeth on upper plate

Mine or prospect

Railroad

Improved road or highway

Unimproved road

Trail

Hill

Estelita Area

Investigated area

QUATERNARY

TERTIARY

CRETACEOUS

JURASSIC AND  
CRETACEOUS

PRE-CRETACEOUS  
OR CRETACEOUS

FIGURE 4. GEOLOGIC MAP OF PART OF THE CAMAGÜEY CHROMITE DISTRICT  
CAMAGÜEY PROVINCE, CUBA



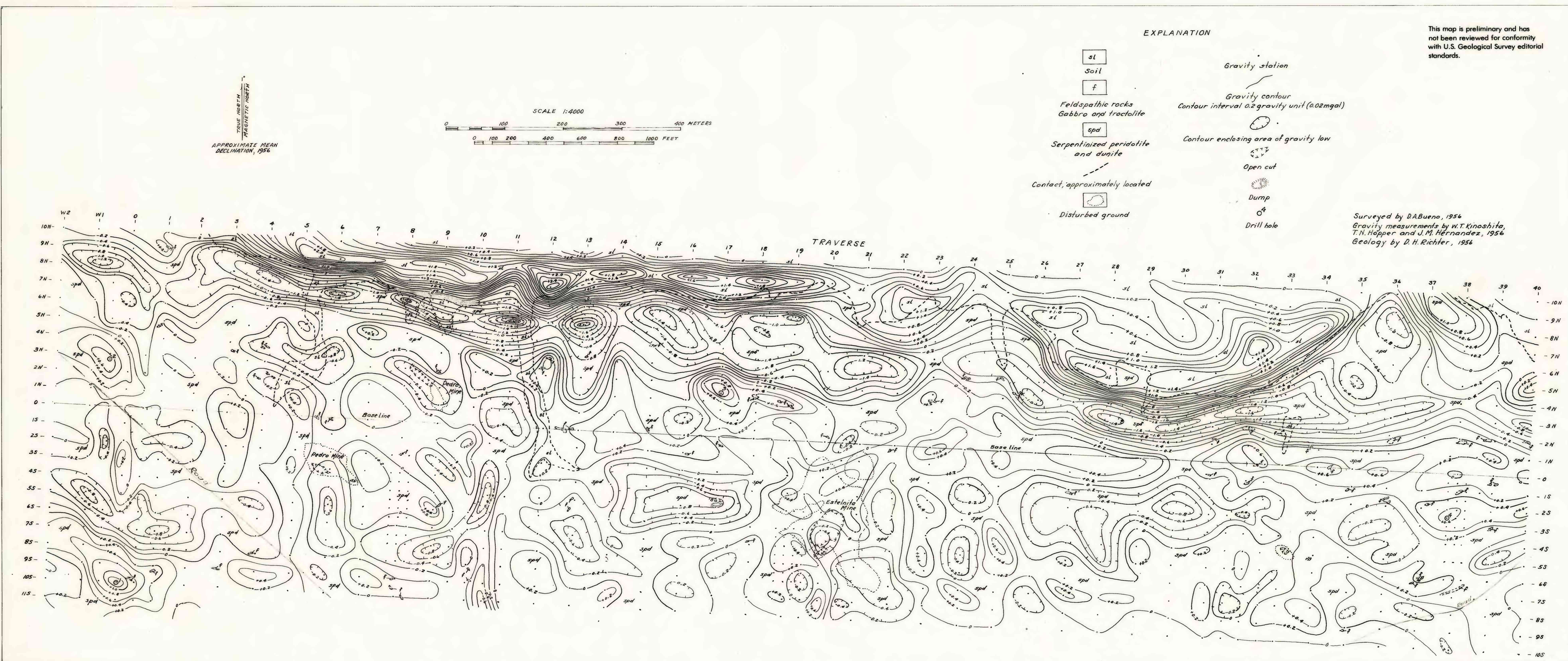


FIGURE 19. RESIDUAL GRAVITY AND GEOLOGIC MAP OF THE ESTELNITA AREA, CAMAGÜEY CHROMITE DISTRICT, CUBA



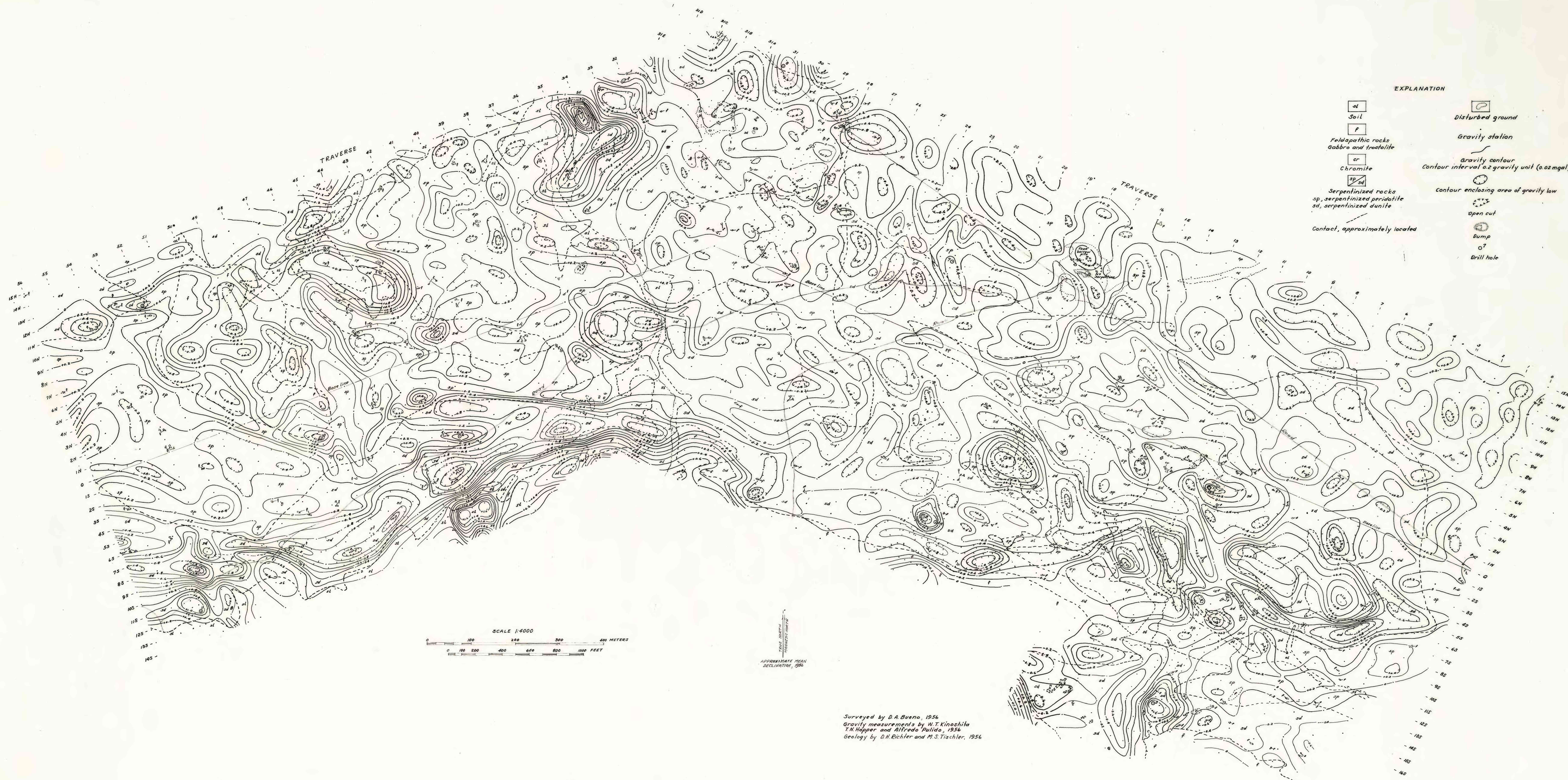


FIGURE 18. RESIDUAL GRAVITY AND GEOLOGIC MAP OF THE ORIENTE AREA, CAMAGÜEY CHROMITE DISTRICT, CUBA



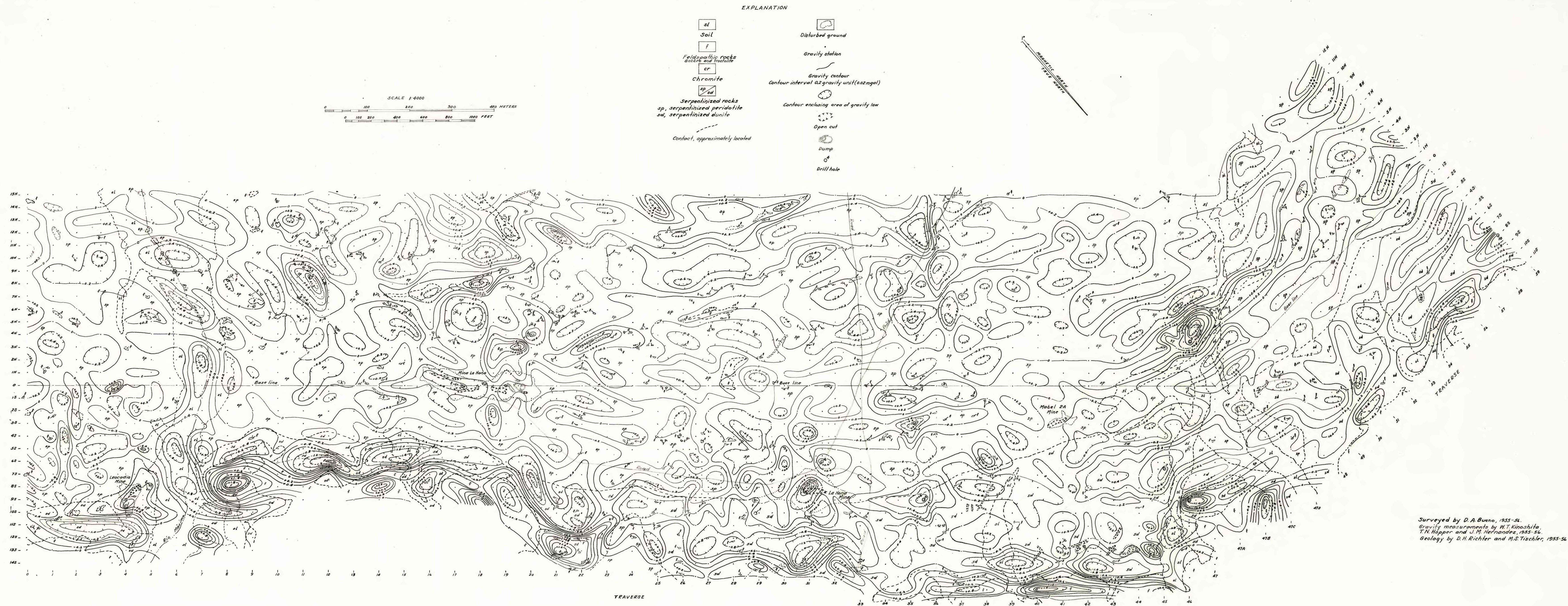


FIGURE 17. RESIDUAL GRAVITY AND GEOLOGIC MAP OF THE LA NONA AREA, CAMAGÜEY CHROMITE DISTRICT, CUBA



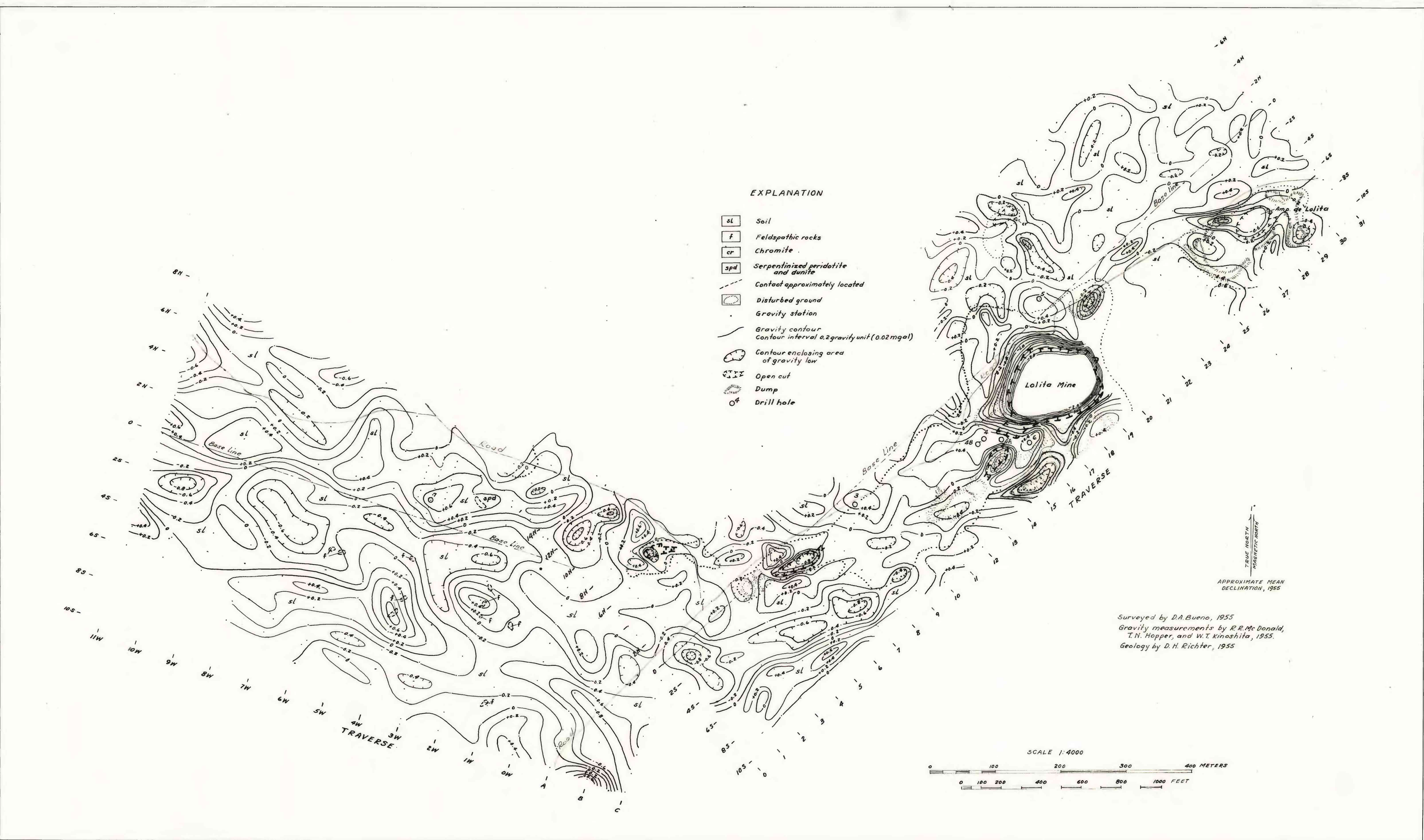


FIGURE 16. Residual gravity and geologic map of the Lolita area, Camaguey chromite district, Cuba.

This map is preliminary and has not been reviewed for conformity with U.S. Geological Survey editorial standards and stratigraphic nomenclature.





FIGURE 15. RESIDUAL GRAVITY AND GEOLOGIC MAP OF THE CARIDAD AREA, CAMAGÜEY CHROMITE DISTRICT, CUBA



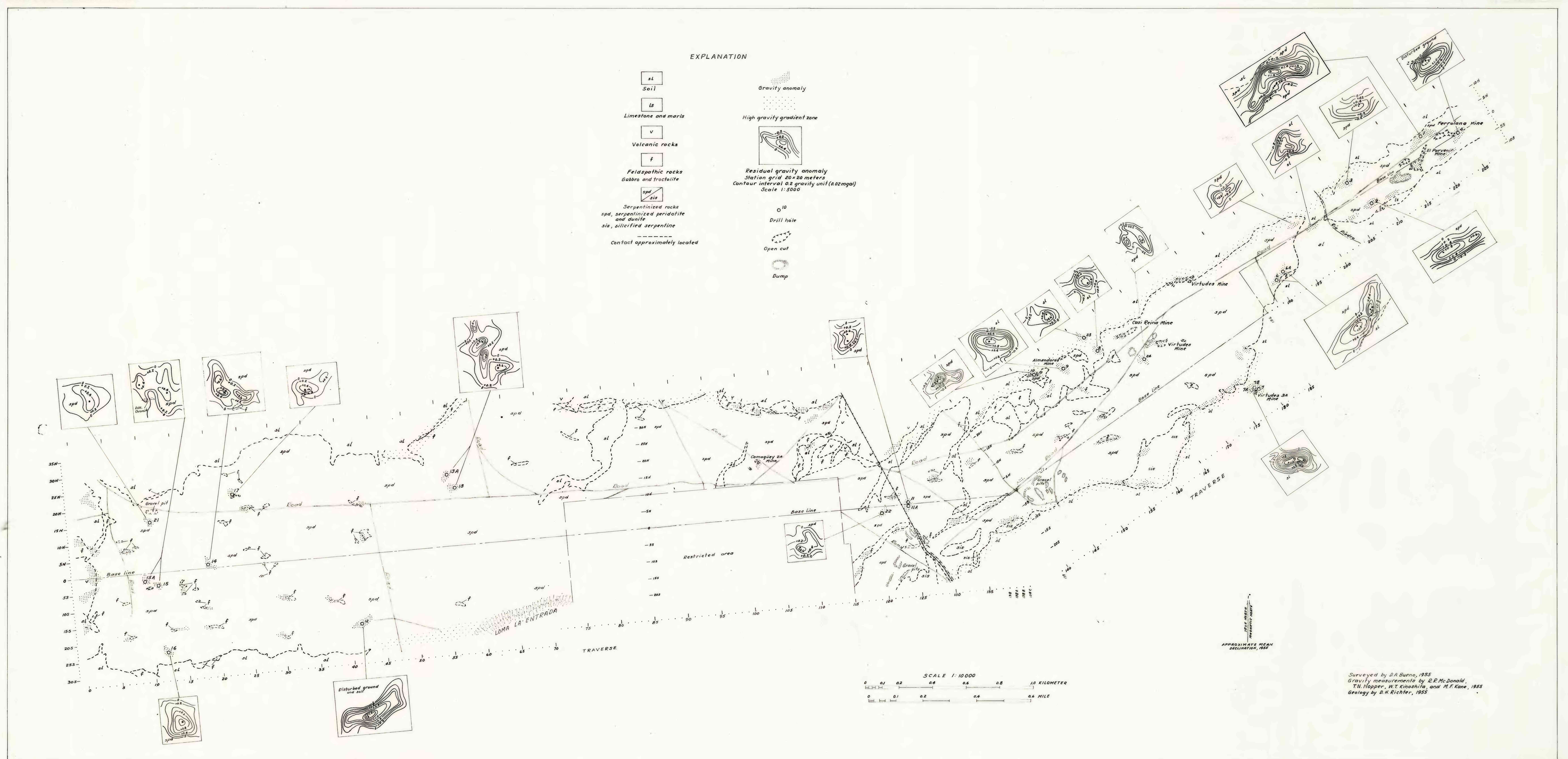
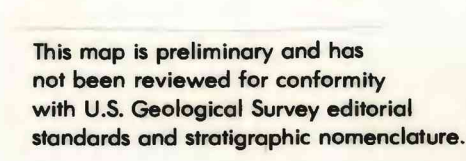


FIGURE 13. GRAVITY FEATURES AND GEOLOGY IN THE CAMAGÜEY AREA, CAMAGÜEY CHROMITE DISTRICT, CUBA







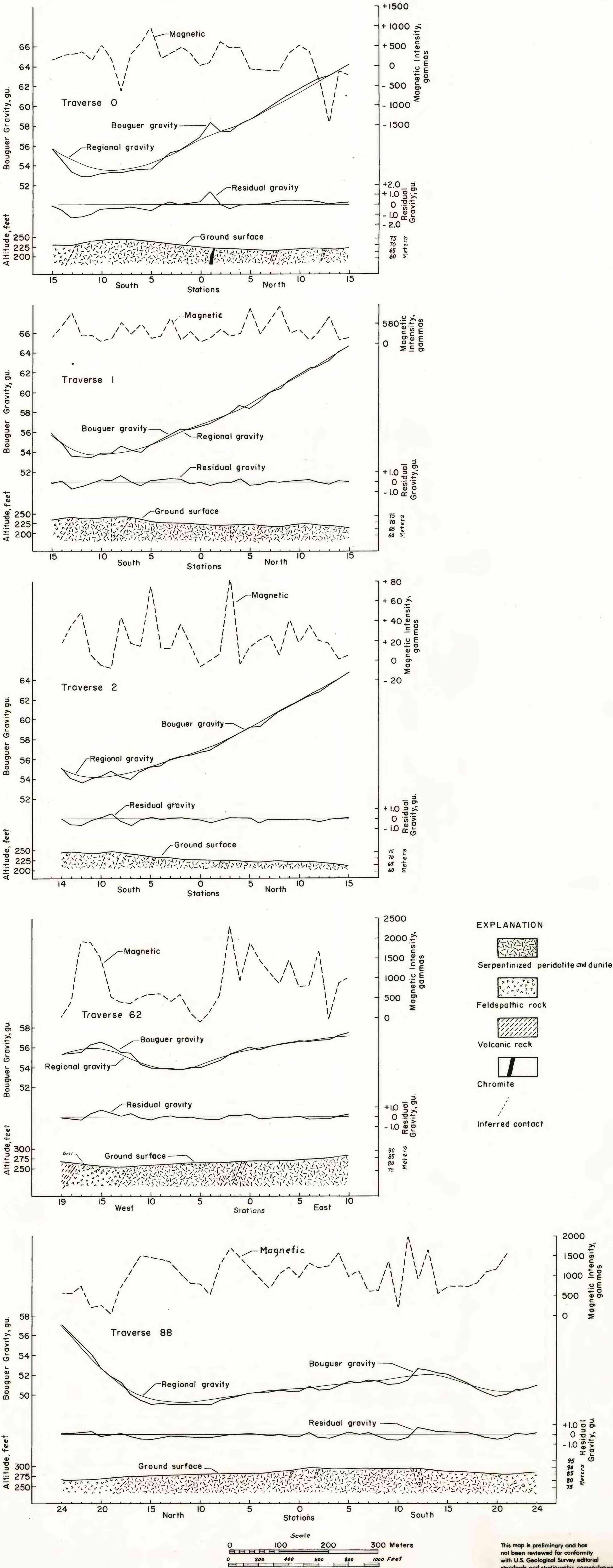


Figure 7. Magnetic, gravity, and geologic profiles along traverses 0, 1, 2, 62, and 88 in the Victoria area.



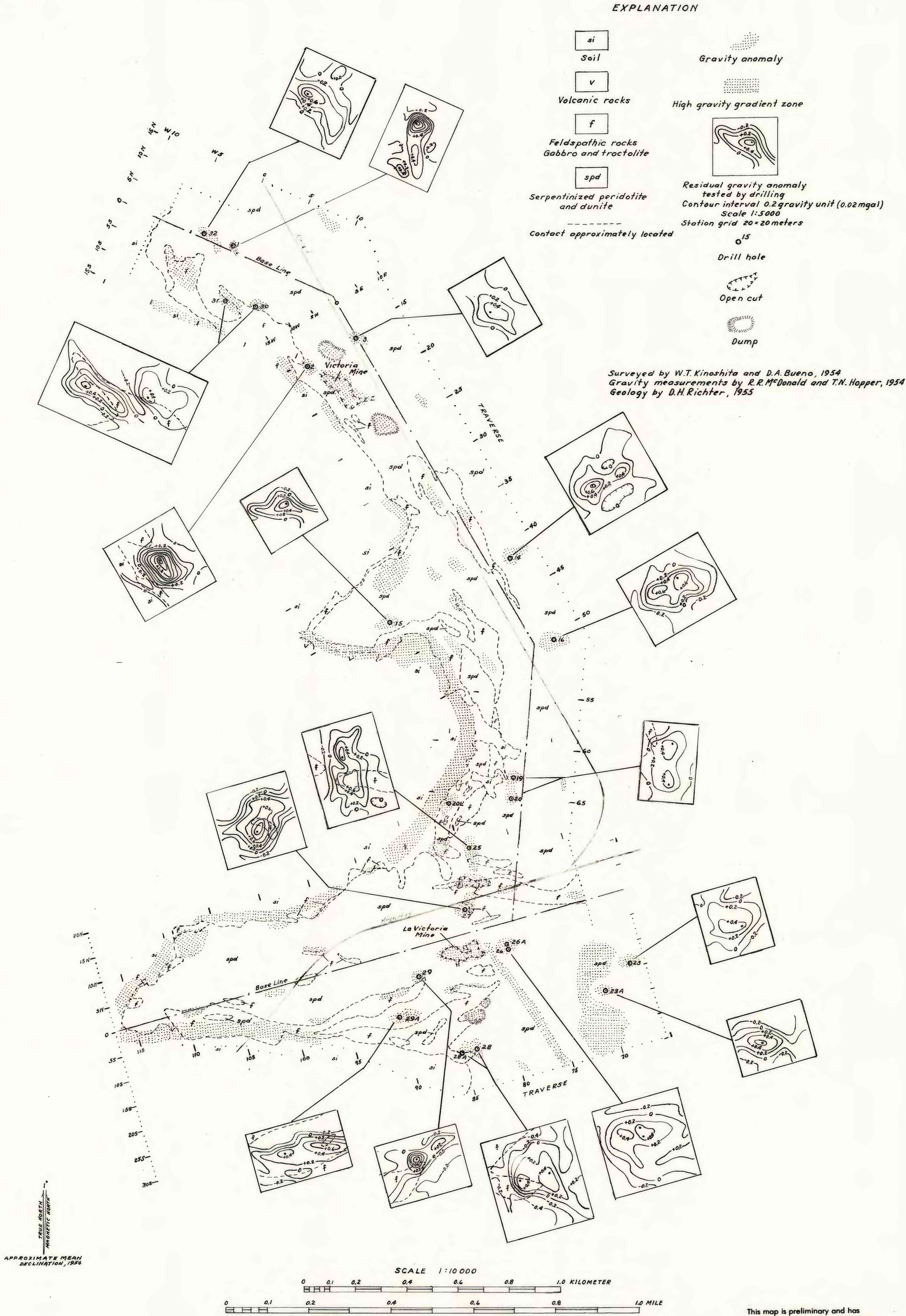


FIGURE 6. GRAVITY FEATURES AND GEOLOGY IN THE VICTORIA AREA  
CAMAGÜEY CHROMITE DISTRICT, CUBA



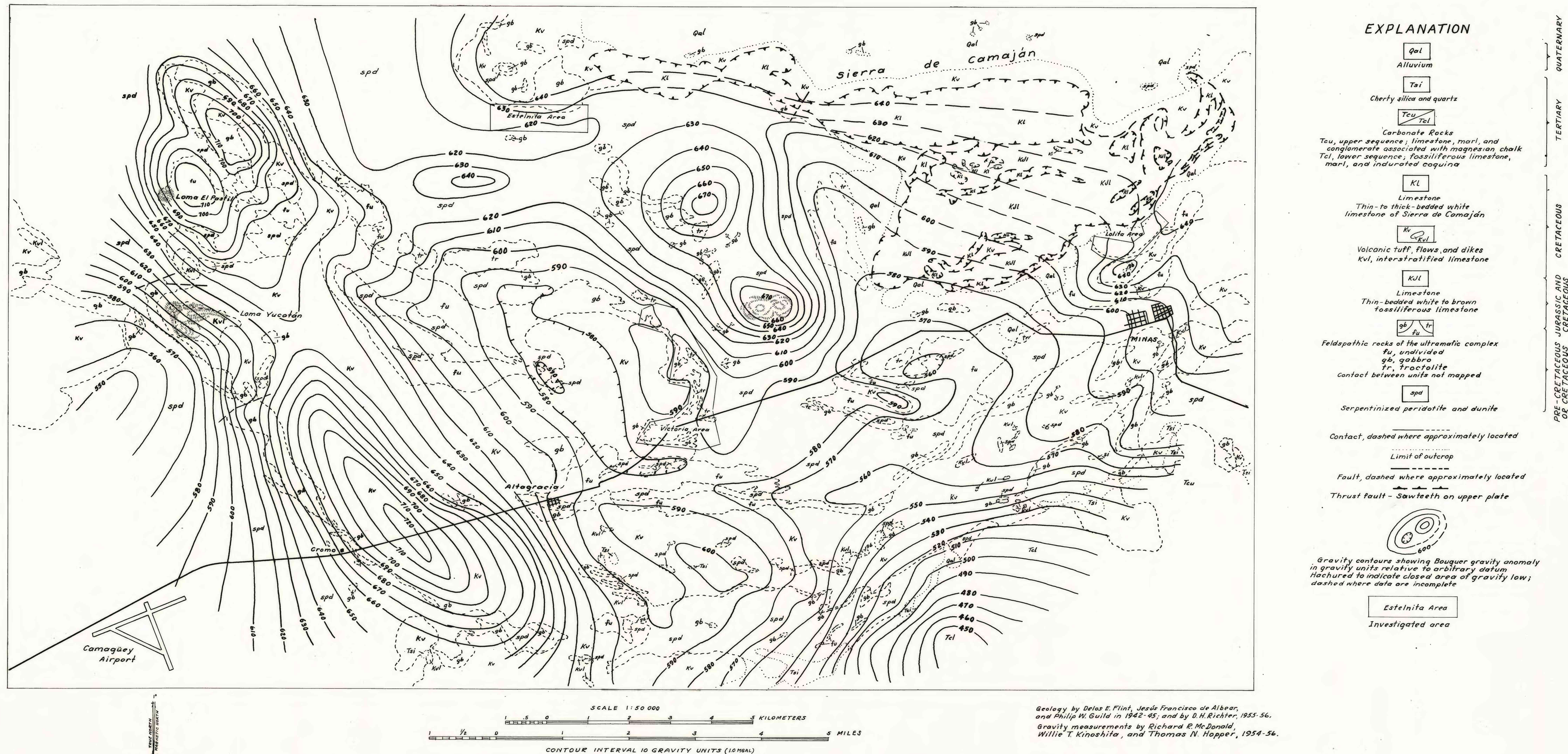


FIGURE 5. BOUGUER GRAVITY AND GEOLOGIC MAP OF PART OF THE CAMAGÜEY CHROMITE DISTRICT  
CAMAGÜEY PROVINCE, CUBA

This map is preliminary and has not been reviewed for conformity with U.S. Geological Survey editorial standards.