



MINING ACTIVITIES IN EASTERN CUBA

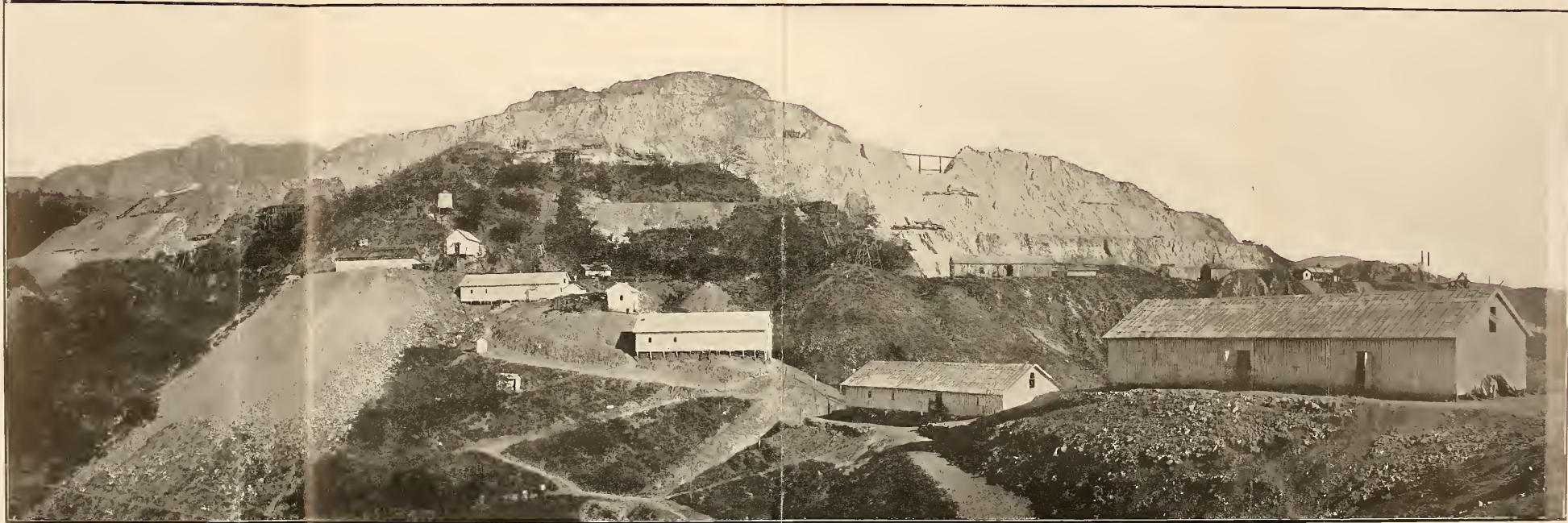


Photo by HARRIS BROS., HA.

Panoramic View of the Iron Mines at Daiquiri of the Spanish-American Iron Company. The deposit is attacked by a series of levels from 40 to 60 feet above one another, the stripping being kept well ahead of the mining operations proper. The configuration of the ground is such that the great amount of waste can be readily disposed of. It is loaded with steam shovels and carried to the dumps. The ore is conveyed to inclined planes at the foot of which it is dropped into pockets from which it is loaded into cars having a capacity of 25 tons on the standard gauge railroad, 4 miles long, which connects with the shipping harbor. The road is equipped with 4 locomotives and 95 cars. The production for many years approximated 500,000 tons, reaching 510,000 tons in 1906. During the last six months of 1909 the exportations of this company to the United States totaled 336,525 tons.* Cuba's total exportations of iron ore for the seven months ending January 31 aggregated in 1908 414,585 tons, valued at \$1,569,321; in 1909 to 370,885 tons, valued at \$1,090,183, and in 1910 to 698,952 tons, valued at \$2,026,580.

*Ton—2,240 pounds avoirdupois.