

EXPLANATION OF THE PLATES.

PLATE I.

Bermuda Islands. Reduced from U. S. Hydrographic Chart, No. 27.

PLATE II.

Fig. 1. The Challenger and Argus Banks to the southwest of Bermuda.

Fig. 2. Section from Somerset Island across the Challenger and Argus Banks.

Depth in fathoms, horizontal scale, 1 inch = 10 miles.

Fig. 3. Section north-northeast from North Rock into 1,370 fathoms.

Fig. 4. Section southeast from Castle Harbor into 1,240 fathoms.

PLATE III.

The Bermuda Islands from Gibbs Hill.

PLATE IV.

Mullet Bay, St. George Island. Characteristic Æolian Hills in the background.

PLATE V.

Bare Hills on the North Shore of the Western Entrance to St. George Harbor.

PLATE VI.

Shore of Harrington Sound.

PLATE VII.

Webb's Pond.

PLATE VIII.

North Rock.

PLATE IX.

Deep Cut through Æolian Rock, Warwick.

PLATE X.

Sink, Warwick, South Shore.

PLATE XI.

Sand Dunes, Elbow Beach.

PLATE XII.

Sand Dunes back of Elbow Beach.

PLATE XIII.

Devil's Hole. Characteristic hardened Æolian Rock.

PLATE XIV.

Lagoon near Tuckerstown.

PLATE XV.

Entrance to Hungry Bay.

PLATE XVI.

Æolian Cliffs near Admiralty House, North Shore.

PLATE XVII.

Pulpit Rock off Ireland Island.

PLATE XVIII.

Half-sunken Ledge, North Shore, off Boat Harbor.

PLATE XIX.

Æolian Cliffs, South Shore, near Middleton Beach.

PLATE XX.

Æolian Cliffs, South Shore, Elbow Bay.

PLATE XXI.

Ledges and Islets off Castle Harbor.

PLATE XXII.

Æolian Cliffs with Serpuline Atolls, South Shore.

PLATE XXIII.

Æolian Rock Pinnacles and Serpuline Atolls, South Shore.

PLATE XXIV.

Serpuline Atolls, South Shore.

PLATE XXV.

Serpuline Atolls, South Shore.

PLATE XXVI.

Fringing Serpuline Reefs, South Shore.

PLATE XXVII.

Pitted and Honey-combed Æolian Rocks, Harrington Sound.

PLATE XXVIII.

Ledge showing Passage of Æolian Rock to Base Rock, Boat Harbor, North Shore.

PLATE XXIX.

Pot-holes, Harrington Sound.

PLATE XXX.

Pseudo-Palmetto Stumps, North Shore.

BERMUDA ISLANDS.

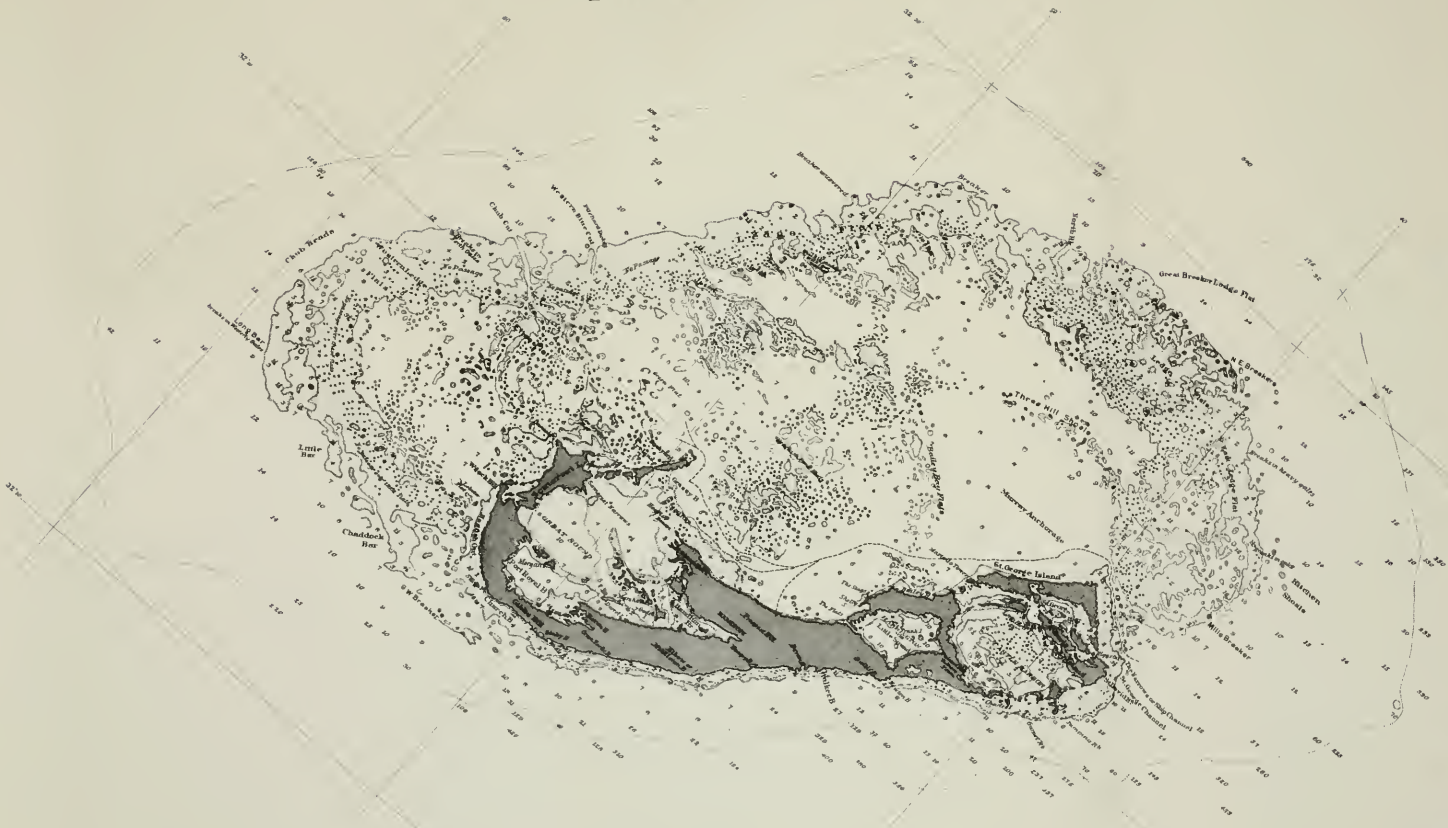


Fig. 1.

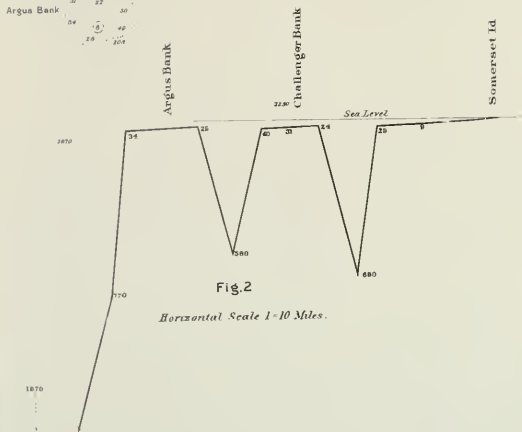


Fig. 2

Horizontal Scale 1-10 Miles.

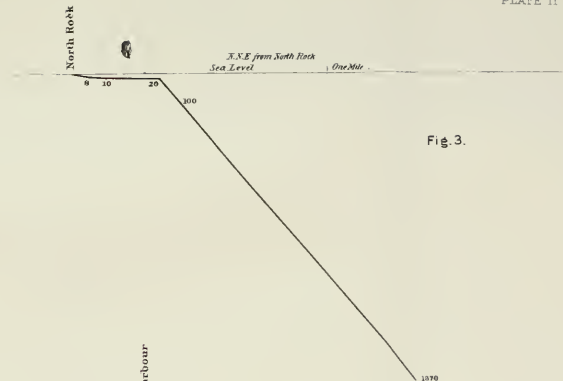


Fig. 3.

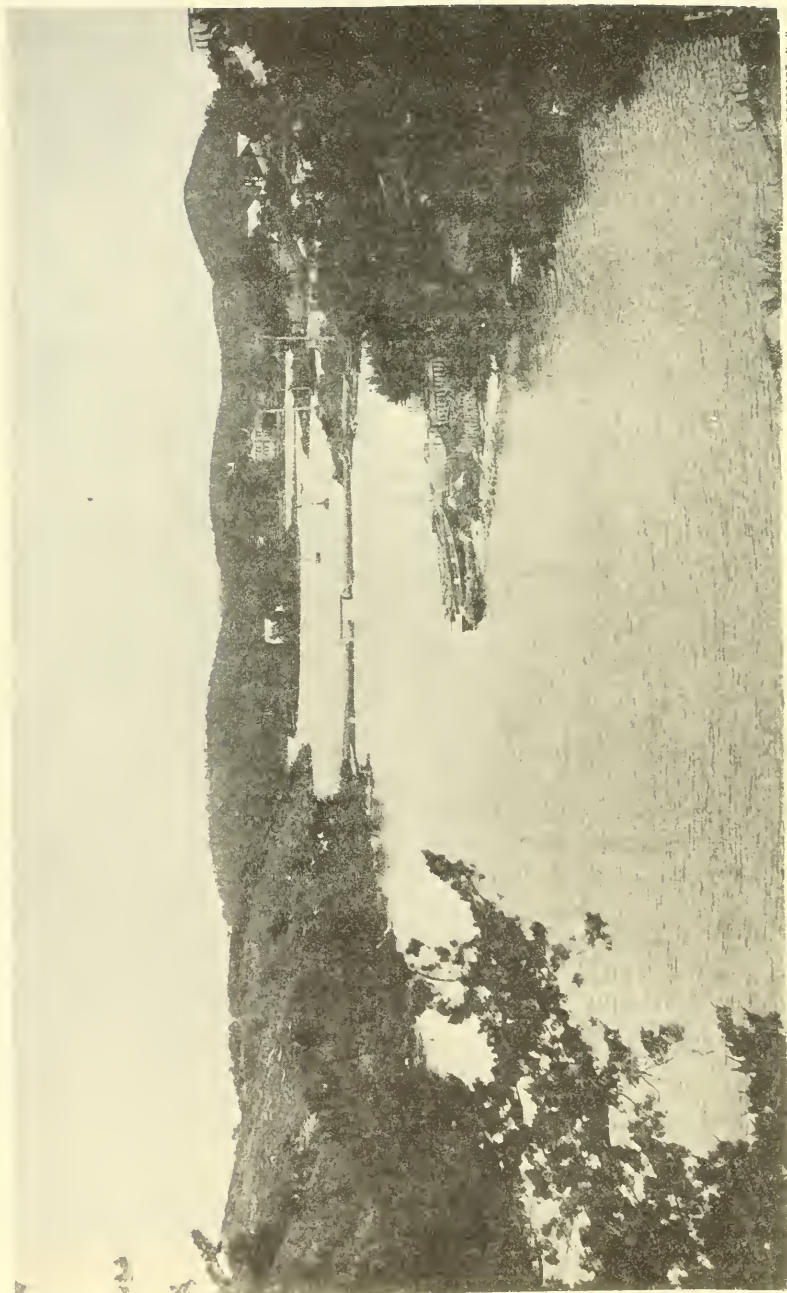


Fig. 4.

Depths in Fathoms.



THE BERMUDAS FROM GIBBS HILL.



ARTOTYPE E. BIERSTADT, N. Y.



ADOLPH E. BERNHARDT N. Y.

NORTH SHORE ENTRANCE TO ST. GEORGE.



PHOTOGRAPH BY BERNARD N.

Agassiz "Bermudas,"

PLATE VII.



NEGATIVE E. BIERSTADT, N. Y.

WEBB'S POND.



PHOTOGRAPH BY E. BIERSTADT, N. Y.

NORTH ROCK.



ARTOTYPE, E. BIERSTADT, N. Y.

DEEP CUT, WARWICK.



ARTOTYPE. E. BIERSTADT. N. Y.



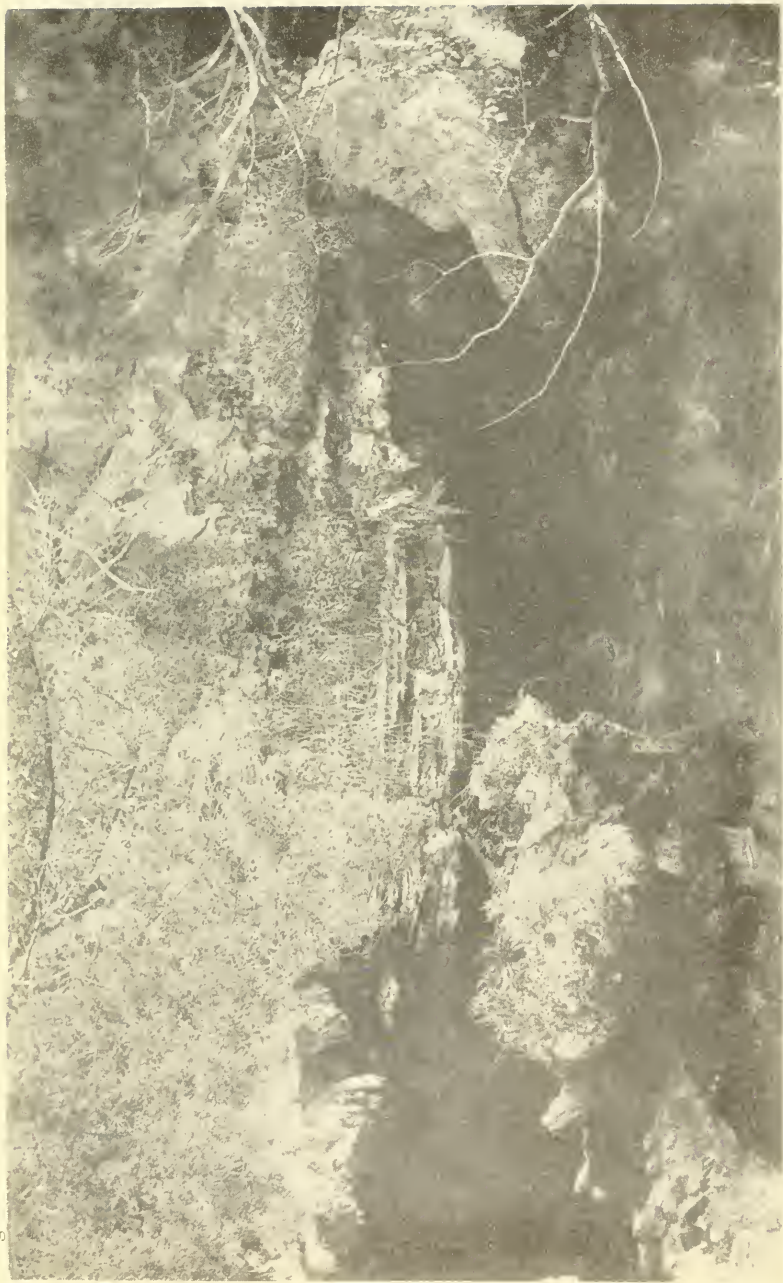
ANTOTYPE E BIERSTADT N Y

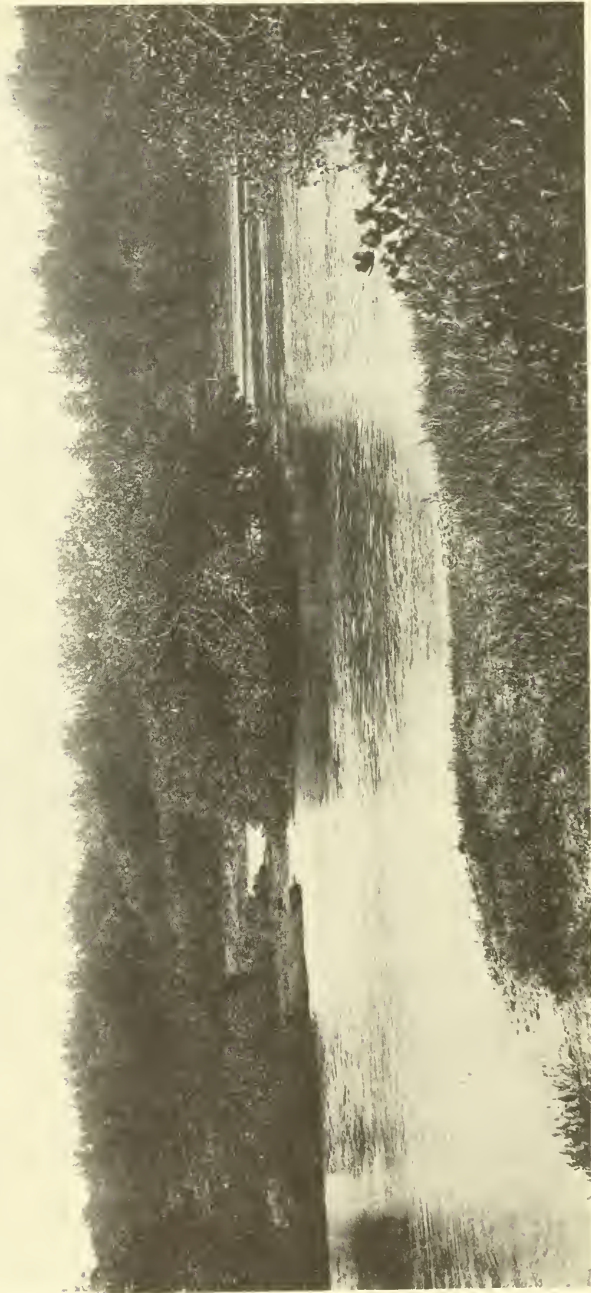
SAND DUNES. ELBOW BEACH.



ARTOTYPE, E. BIERSTADT, N. Y.

DUNES BACK OF ELBOW BEACH.





ARTOTYPE, E. BIERSTADT, N. Y.



ARTIST, E. BIERSTADT, N. Y.

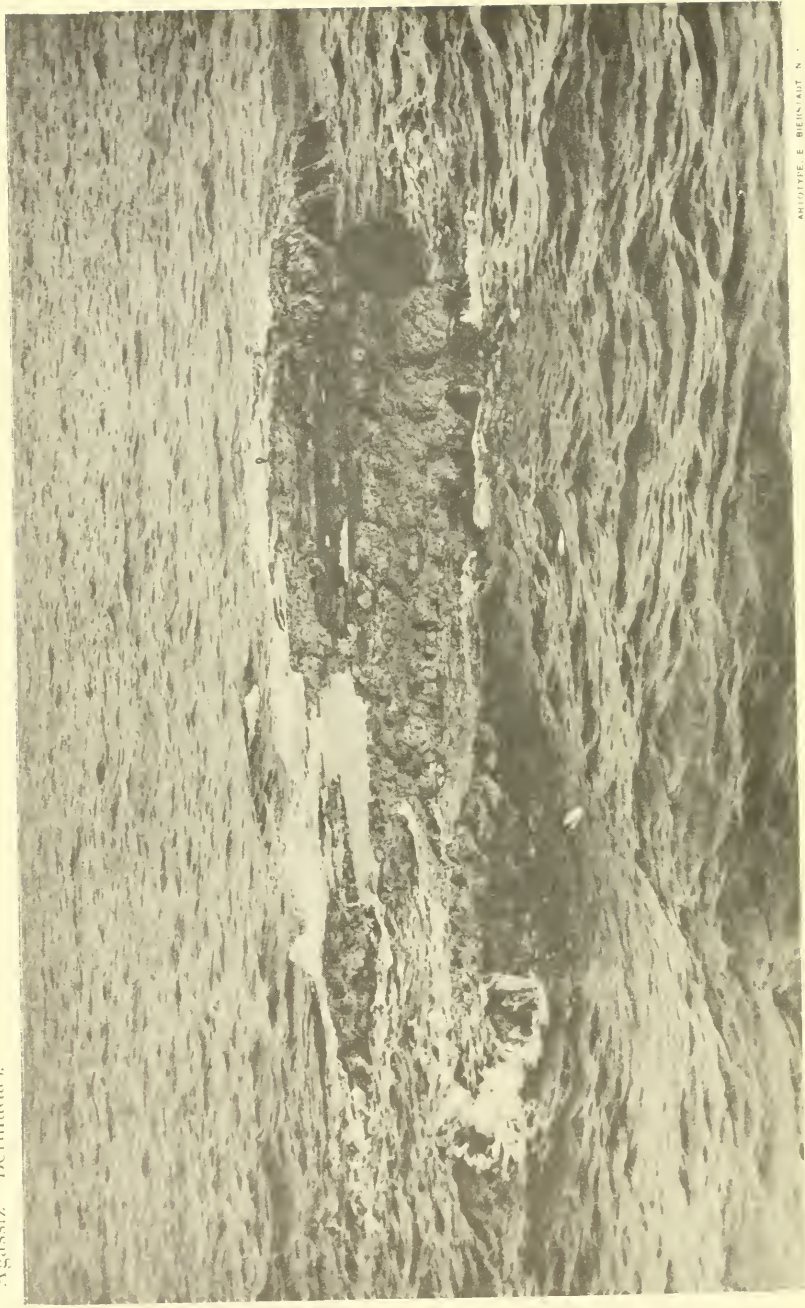


ARTOTYPE, E. BIERSTADT, N. Y.

ÆOLIAN CLIFFS, NORTH SHORE.



ARTOTYPE, E. BIERSTADT, N. Y.





ARTOTYPE, E. BIERSTADT, N. Y.

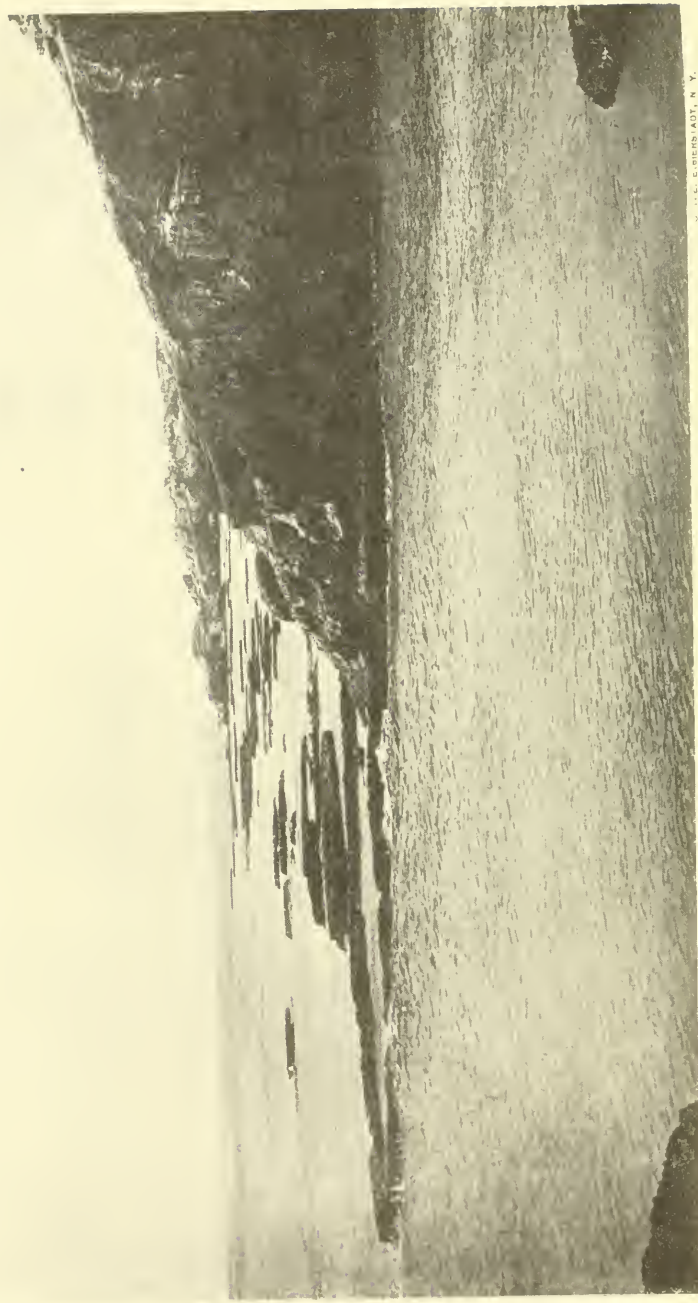


ARTISTYPE E. BIENSTADT N. Y.

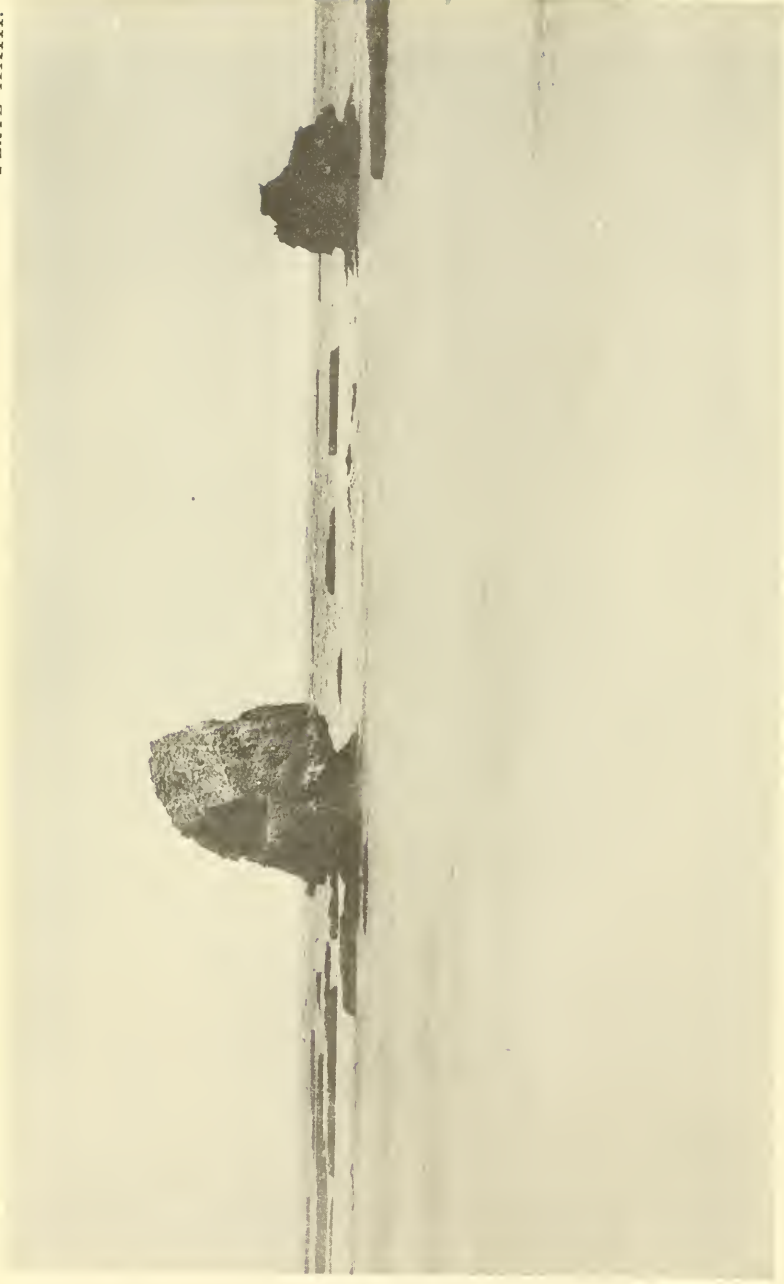
CLIFFS. SOUTH SHORE.



AR'ONDE E BIERSTADT, N.

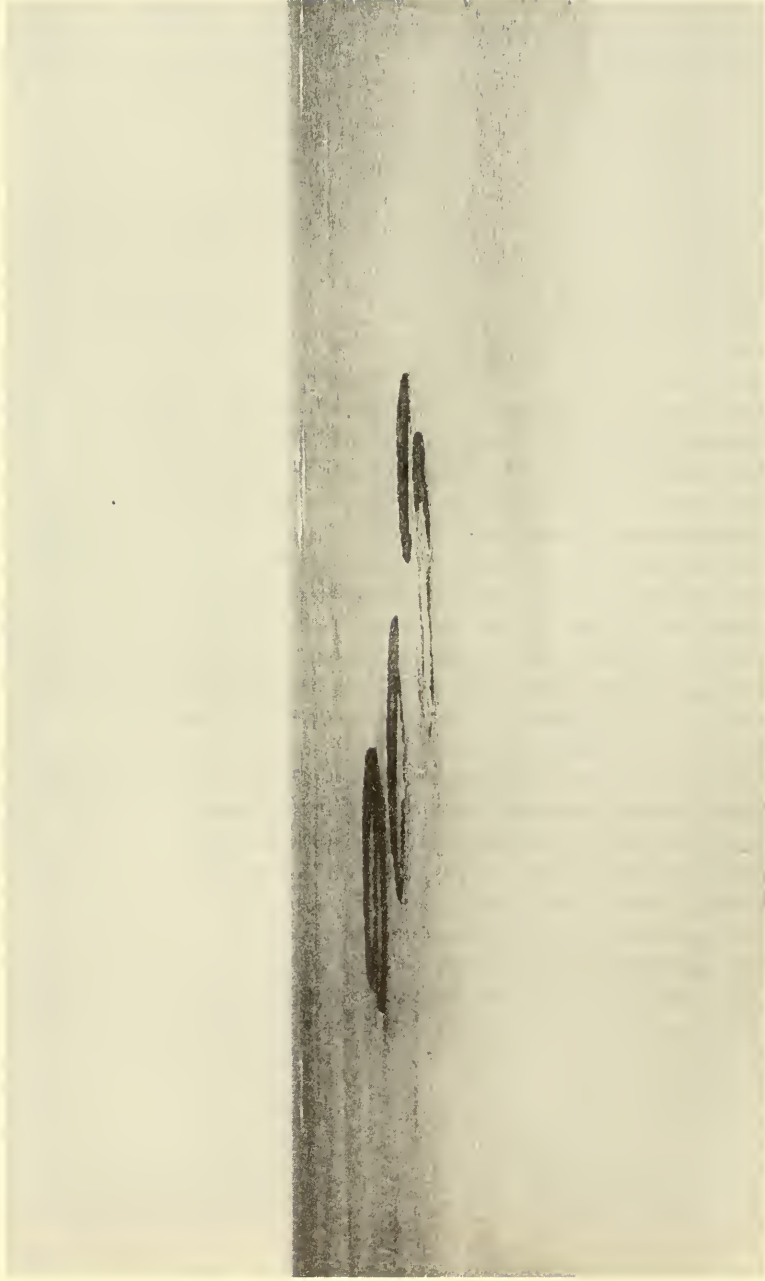


J. C. E. BIERSTADT, N. Y.



PINNACLES AND SERPULINE ATOLLS.





ARTIST: E. BIERSTADT, N. Y.

SERPULINE ATOLLS OFF SOUTH SHORE.





ARTOTYPE, E. BERSTADT, N. Y.

HONEYCOMBED ÆOLIAN ROCKS, HARRINGTON SOUND.

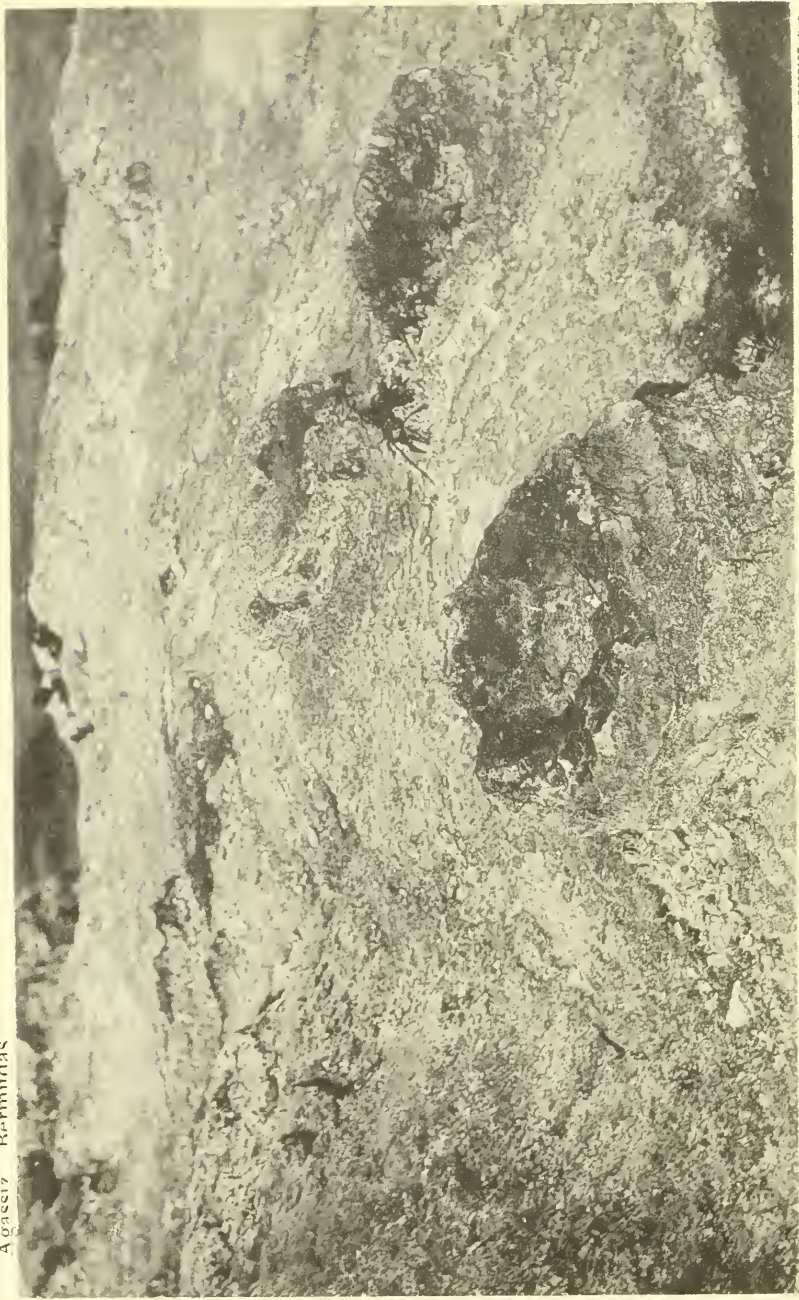


PHOTOGRAPH BY E. BIERSTADT, N. Y.



ARLOTYPE & BIERSTADT, N. Y.

POT HOLES, HARRINGTON SOUND.



ARTOTYPE, E. BIERSTADT, N. Y.

PALMETTO STUMPS, NORTH SHORE.